

WHY BUY A TIFFIN MOTORHOME?

The Best Limited Warranty in the Business

10-YEAR UNITIZED CONSTRUCTION WARRANTY

THE STRUCTURAL INTEGRITY OF THE ENTIRE COACH IS GUARANTEED FOR THE NEXT 10 YEARS. THIS INCLUDES WALL SEPARATION AND INNER FRAME WEAKNESS.

5-YEAR "HYDRA-VAC" LAMINATION WARRANTY

WE GUARANTEE AGAINST ALL EXTERIOR FIBERGLASS DELAMINATION OR WALL SEPARATION.

We can make these guarantees, and no one else can come close to these, because we take the extra steps and make the extra investment in the building methods and materials that support these extraordinary guarantees. It's not the cheapest way to build motorhomes, but it is the best way. It's the Tiffin way.

Service After the Sale

The feeling of freedom, of being able to go anywhere you want, is something that can't really be put into words. It's kind of like the feeling you get when buying a Tiffin. It's a freedom, too. A kind of confidence and peace of mind that you just can't get from other manufacturers. We not only stand behind every coach we sell, but we stand behind every customer as well. Because we don't want anything to detract from your unique experiences exploring the world in a Tiffin. So when you slide behind the wheel of one of our motorhomes, just look over your shoulder. There's an entire company riding right there behind you—every mile of the way.

ZEPHYR



DEALER:

www.tiffinmotorhomes.com



TIFFIN MOTORHOMES, Inc. 105 2nd Street NW Red Bay, Alabama 35582 CALL 256.356.8661 FAX 256.356.8219

The following names are registered trademarks of Tiffin Motor Homes: Open Road®, Phaeton®, Allegro®, Allegro Bay®, Allegro Bus®, Zephyr®, Roughing It Smoothly®, and Pusher®.



'05

WHEREVER
YOU GO, WE GO.



Whether you're traveling to the Mason-Dixon Line in Manchester, Maryland, or the car pool line in Manchester, Georgia, with a Tiffin motorhome, every trip is a vacation.

With this kind of quality and luxury, you'll be tempted to take your Tiffin everywhere.



ZEPHYR COCKPIT



The QUALITY and LUXURY of the Zephyr starts right up front in the cockpit. The EASY-TO-READ GAUGES are all within easy reach of both the driver and front passenger, including the button for ONSTAR® service—

just another way to feel confident behind the wheel of a Tiffin. The Ultra leather Flexsteel® captains chairs not only provide unparalleled COMFORT on the road, but they also have integrated seat belts and can be swiveled around for ADDITIONAL SEATING in the living room.

ZEPHYR LIVING AREA



NOB HILL



Rivaling most home living rooms, the ELEGANT LIVING AREA offers luxury and convenience at their very best, with far MORE CABINETS than those offered by other manufacturers. And each of the cabinets has a SOLID HARDWOOD door.

The BRUSHED NICKEL faucet adds to the durability and appearance of the gourmet galley that houses a convection microwave, SOLID SURFACE countertops and a side-by-side STAINLESS STEEL refrigerator.

ZEPHYR BEDROOM



NOB HILL



Not to be outdone by the rest of the coach, the bedroom in the Zephyr is just as opulent as the rest of the vehicle. A huge KING-SIZE bed, surrounded by meticulously crafted cabinetry and woodwork, dominates the space, while leaving PLENTY OF ROOM to move about.

A sink and vanity are strategically situated along one wall for CONVENIENCE without being a hindrance. A CEDAR-LINED WARDROBE gives you plenty of storage space for your clothes, while the mirrored doors gives the room a more SPACIOUS feel.

ZEPHYR BATHROOM

FABRICS & CABINETS



GOLDEN GATE



Bedroom Bedroom Accent Bedroom Throw



Sofa Living Area Accent Dinette



Carpet

NOB HILL



Bedroom Bedroom Accent Bedroom Throw



Sofa Living Area Accent Dinette



Carpet



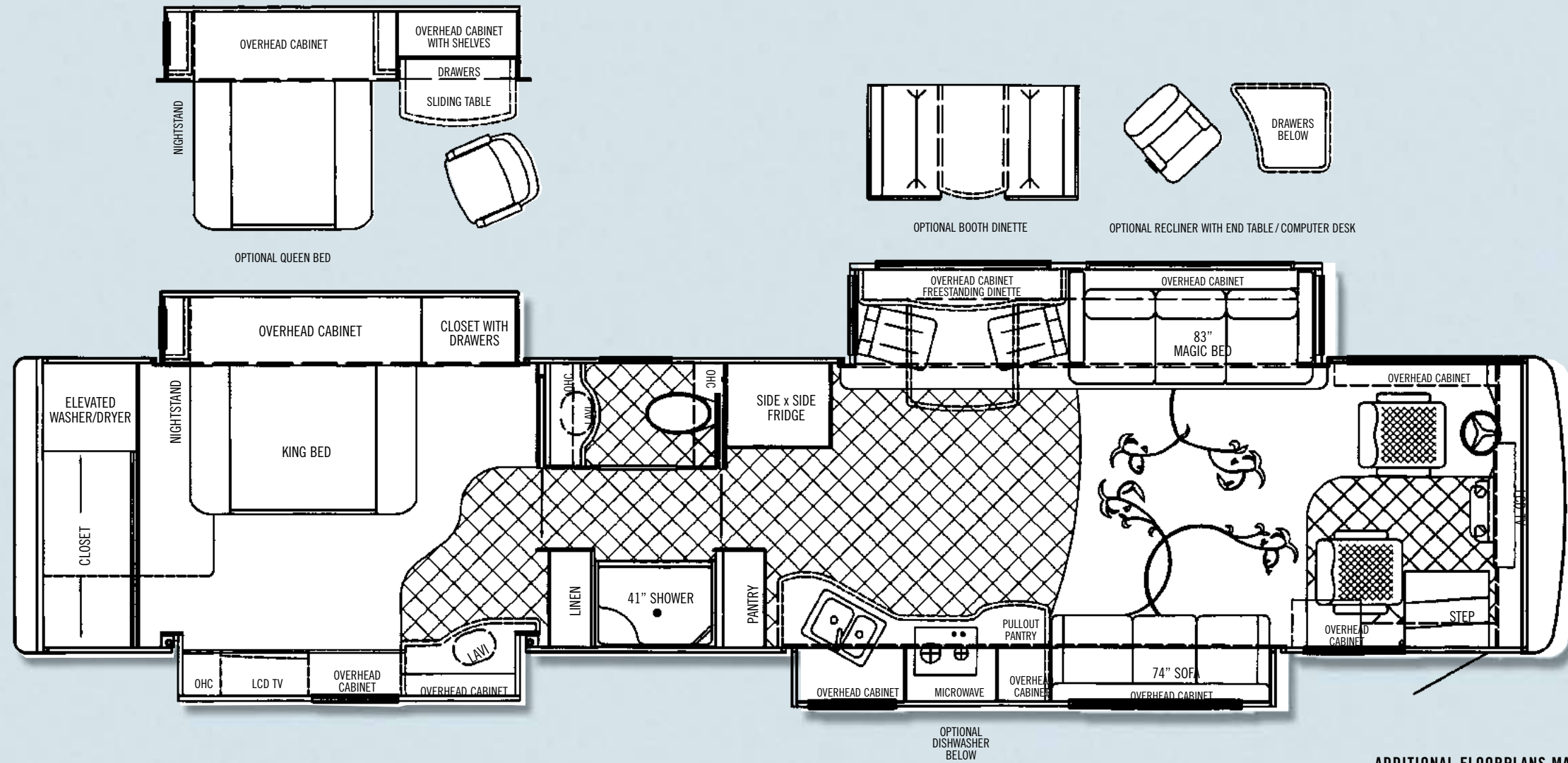
Natural Cherry



Cherry Bark

The MOEN® accessory package in the bathroom has brushed nickel accents and the separate shower stall and toilet afford PLENTY OF PRIVACY. Along with our frames and cabinets, all fiberglass parts are manufactured locally, helping to ensure the most stringent quality control.

Our fabric designs and choices of wood grain are sure to suit every taste. All cabinet finishes are available in combination with all fabric schemes.



45 QDZ

ADDITIONAL FLOORPLANS MAY BE AVAILABLE ON OUR WEBSITE.
www.tiffinmotorhomes.com



NASA FULL BODY



SUNLIT SAND FULL BODY

ZEPHYR SPECIFICATIONS

'05

AUTOMOTIVE

STANDARD EQUIPMENT			
• 500 HP @ 1,900-2,000 rpm Cummins ISM Engine	• Tag Axle 10,000 lb.	• Michelin Tires	• Aluminum wheels

STANDARD EQUIPMENT	MODEL	45 QDZ
Torque (Lb.-Ft. Max. Net)		1550 @ 1,300
GVWR		44,600
GAWR-Front		14,600
GAWR-Rear		20,000
GCWR		54,600
UVW		36,420
Fuel Tank (gallons)		150
Wheel Base		306"
Tire Size		295/80R22.5
Alternator Amps		270

OVERALL

MODEL	45 QDZ
Overall Length – Approximately	44' 9"
Overall Height with Roof Air (Maximum)	12' 10"
Interior Height	84"
Overall Width	101"
Interior Width	96"
Fresh Water (Gallons)	90
Black Water (Gallons)	46
Grey Water (Gallons)	70
LPG Tank (Gallons; can only be filled to 80% capacity)	24.4
Minimum Garage Height	13'

STRUCTURAL

STANDARD EQUIPMENT		
• Steel Cockpit Overhead Support Structure	• Steel / Aluminum Laminated Side Walls, Floor & Roof	• Steel Basement Construction
• Seamless One Piece Gel Coat Fiberglass Molded Roof Cap	• 1/2" Laminated Floor Decking	• Insulated Firewall
• One Piece Molded Gel Coat Fiberglass Front & Rear Caps with Integrated Air Intake	• Insulated Roof Duct Laminated into Roof Construction	• Insulated Steel Cage Engine Cover
• Laminated Gel Coat Fiberglass Sidewalls		

EXTERIOR

STANDARD EQUIPMENT		
• One Piece Fiberglass Gel Coat Front & Rear Fenders with Integrated Storage	• Black Tank & Grey Tank Flush System	• Deadbolt Entrance Door Lock
• Fiberglass Gel Coat Engine Access Door with Swing Out Hinges & Shocks	• Water Filter System	• Keyless Entry System
• One Piece Aluminum Face Baggage Doors with Integrated Power Locks	• Vented Fresh Water Tank for Portable Water Fill	• Air Gliding Step Cover
• Pass Through Basement with Pull Out Storage Tray (Both Sides)	• Power Garden Hose Reel	• Rear Roof Ladder
• Phone, 120v & 12v Outlets Inside Storage Compartment	• Outside Shower	• Heavy Duty Rear Hitch
• One Piece Pull Out Generator Access Door	• Recessed Docking Lights	• Full Length "ZEPHYR" Mud Flap
• Fiberglass Water Service Center Panel & Compartment	• Recessed Fog Lights	• Side View & Rear Cameras
• Three Low Profile Roof Air Conditioners with Heat Pumps	• Spot Light Mounted on Roof	• TV Antenna
• Easy Hook-Up Water Compartment with Built-in Hose Exits	• Roof Mounted Air Horns	• Electric Power Cord Reel
• Multi-Port Manifold System for Hot & Cold Water Lines	• Basement & Outside Compartment Lights	• 10 KW Generator with Bedroom & Cockpit Start Switches
• Hydraulic Heating System with Continuous Hot Water	• Porch Light	• 3000 Watt Invertor with Generator Start
• Water Pump Switch Located at Galley, Lavatories & Water Service Compartment	• Lighted Exterior Grab Handles	

DRIVER'S COMPARTMENT

STANDARD EQUIPMENT		
• Ergonomic Wrap Around Dash with Burl Instrumentation Panels	• Power Steering	• Compass with Outside Temperature
• Back Light Lettering for Dash Controls	• Power Sun Visors	• Color Rear Vision Monitor System
• Built-in Driver & Passenger Consoles with Controls	• Driver & Passenger Overhead Fans	• CB Radio with Antenna
• 6-Way Power Driver & Passenger Seating with Co-Pilot Power Footrest	• Pull Down Black-out Screens on Driver/Passenger Windows	• Cellular Phone Antenna
• Integrated Pilot & Co-Pilot Seat Belts	• Diamond Pattern Chrome Step Well Area	• In-Dash AM/FM Radio & 6-Disc CD Player
• Storage Drawers with Built-in Beverage Tray	• ON STAR System	• 32" LCD TV over Cockpit Area
• Smart Wheel with Controls for ICC, Cruise & Windshield Wipers	• Pilot & Co-Pilot Map Lights	• Quick Power Disconnect
• Adjustable Accelerator & Brake Pedals	• Dual 12v Outlets in Dash Area	• Fire Extinguisher

LIVING AREA / DINETTE

STANDARD EQUIPMENT		
• Built In Dinette Cabinets with Storage (with free standing table)	• Sculptured Carpet in Living Area	• Home Theater System with DVD Player
• 83" Magic Bed on Driver Side-Cloth	• Decorative Wall & Dinette Lighting Package	• VCR & Switching Box
• 74" Ultra Leather Magic Bed on Passenger Side	• Full Length Mirrors in Living Area	• Carbon Monoxide Detector

MODEL	45 QDZ
• Booth Dinette	0
• Recliner & Computer/End Table on Driver Side	0

KITCHEN

STANDARD EQUIPMENT		
• Solid Surface Counter Tops with Accent Colors	• Integrated Solid Surface Galley Sink with Solid Surface Covers	• Hardwood A/C Return & Galley Light Covers
• 14 Cu. Ft. Side-by-side Refrigerator with Stainless Front & Ice Maker	• Solid Surface Splash Guards with Metal Deco Inlays	• Triple Fluorescent Galley Light
• Recessed Princess 2-Burner Cook Top with Solid Surface Covers	• Pull-Out Hardwood Pantry with Solid Surface Cutting Board	
• Convection Microwave with Stainless Front	• Mini Blinds & Hardwood Valance	

MODEL	45 QDZ
Dishwasher with Hardwood Front	0

BATH

STANDARD EQUIPMENT		
• Two Lavatories with Medicine Cabinets and Drawers	• Mini Blinds & Hardwood Valance	• Towel Holders, Robe Hook, & Lavatory Accessories Package
• Electric Flush Commode	• Solid Surface Shower Walls with Molded Fiberglass Base	• Raised Panel Bath and Pocket Doors
• Integrated Solid Surface Lavatory Sinks	• Cosmetic Lights over Lavatories	

BEDROOM

STANDARD EQUIPMENT		
• King Bed with Nightstand	• Large Wardrobe Closet with Built-in Shelf & Sliding Hardwood/Mirror Doors	• Large Carpeted Storage Area beneath Bed
• Duvet Package with Pillows	• Shirt Closet with Drawers	• LP Detector
• 22" LCD TV	• Built-in Radio with Clock & CD Player	• Combination Washer/Dryer

MODEL	45 QDZ
Queen Bed with Chair & Sliding Table	0

GENERAL INTERIOR

STANDARD EQUIPMENT		
• Wall Mounted Thermostats	• Wallpaper Covering on Sidewalls	• Rope Lights in Window Valances
• 12 Volt Attic Fans with Wall Mounted Controls	• Padded Soft Touch Vinyl Ceiling with Recessed & Fluorescent Lights	• 50 Amp Distribution with Surge Protection
• Cable TV Hook-Up and Phone Jacks	• Day/Night Pleated Shades with Hardwood Valances Accented with Fabric	• 12 Volt Fuse Panel
• Solid Hardwood Arch/Raised Panel Doors	• High-gloss Tile Flooring with Metal Deco Inlays	• Battery Disconnect Switch
• Carpeted Cabinet Shelves	• Carpeted Speakers with Matching Hardwood Louvers	• Smoke Alarm
• Ball Bearing Drawer Slides	• Wall Mounted Switches for Lights & Accessories	• GFI Outlets at Galley & Lavatories
• In-Motion Digital Satellite System	• Rope Lights Beneath Galley and Bedroom Vanity Area	• Lighted Interior Grab Handles

MODEL	45 QDZ
Natural Cherry Cabinetry	0
Cherry Bark Cabinetry	0