

2017

ZEPHYR®



TIFFIN
MOTORHOMES



SHOWN 45 OZ FLOOR PLAN WITH WHITE MAHOGANY EXTERIOR PAINT SCHEME



SHOWN 45 OZ FLOOR PLAN WITH GLAZED CANYON CHERRY CABINETS & SAND DOLLAR INTERIOR



ZEPHYR

2017

Raising the bar. Again.

Re-imagined and redesigned, the all-new 2017 Zephyr showcases Tiffin craftsmanship at its finest. From sumptuous interiors to gleaming exteriors, this spacious coach is 45 feet of pure luxury in motion, with every square inch designed to impress: Top-of-the-line materials throughout. Upscale amenities to rival a five-star hotel. Masterful engineering that commands the road, easily towing up to 15,000 lbs. For those who seek the ultimate RV experience, it doesn't get better than this.

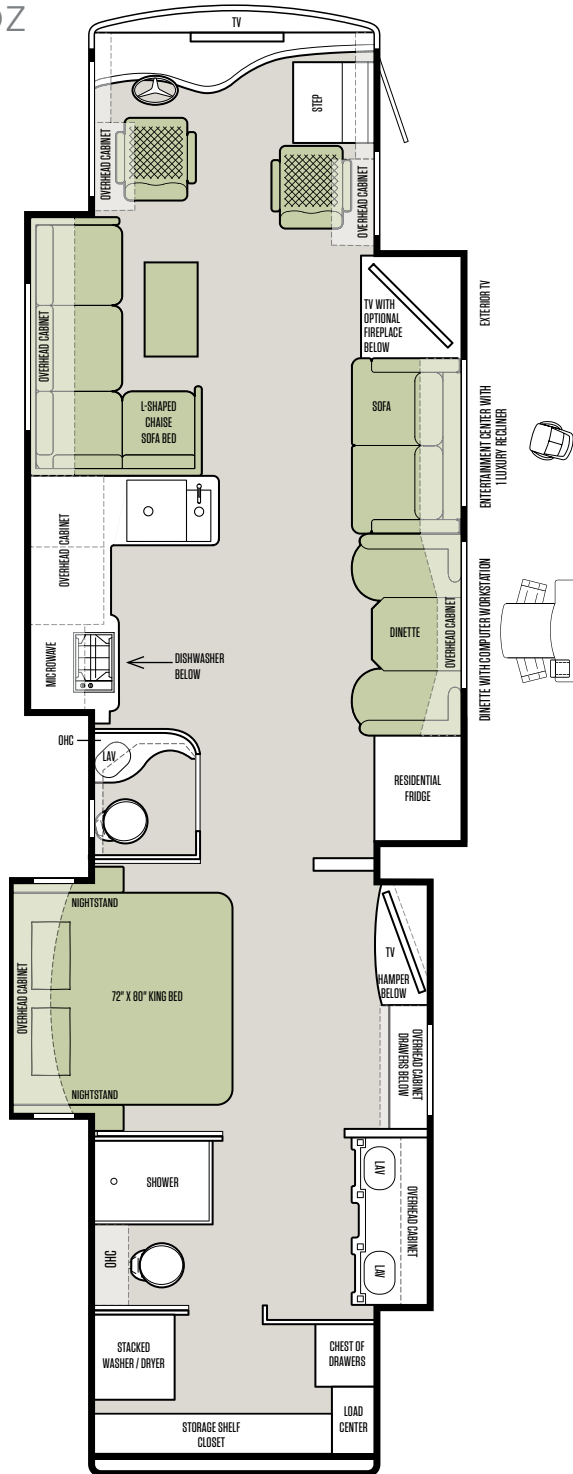
THE MOST IMPRESSIVE CLASS A MOTORHOME IN THE INDUSTRY.



SHOWN 45' OZ FLOOR PLAN WITH GLAZED CANYON CHERRY CABINETS & SAND DOLLAR INTERIOR

Tiffin floor plans: Thoughtful in every detail and in every dimension.

45 OZ



The design of every Tiffin floor plan must meet four essential criteria: **Maximum space. Optimal organization. Relaxation plus. Elegant atmosphere.** MORE plans offer your family the most comfortable layout for life on the road.

Note: If optional furniture combinations are selected, window locations may vary from diagram shown.

Now it's time to personalize your coach.

1

Start with our handcrafted hardwood cabinetry available in your choice of luxury finishes: Glazed Canyon Cherry, Glazed Cherry, Glazed Honey Natural Cherry, or White Chocolate.

CABINETS



GLAZED CANYON CHERRY



GLAZED CHERRY



GLAZED HONEY NATURAL CHERRY



WHITE CHOCOLATE (BATH)

STANDARD FLOORING



TILE



CARPET

2

Then, add texture with our designer fabric suite: Sand Dollar. All fabrics are treated for stain resistance.

SAND DOLLAR

LIVING AREA & KITCHEN



PILLOWS



VALANCE

KITCHEN

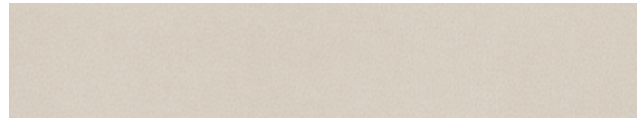


BACKSPLASH



COUNTERTOP

SOFA & COCKPIT SEATS



STANDARD LEATHER

BEDROOM



EXTERIOR DÉCOR

FULL-BODY PAINT SCHEMES

PREMIUM PAINT SYSTEM

Our eight-step full-body paint system features premium grade paints sealed with four layers of superclear coat with ultraviolet protection. An additional layer of scratch-resistant plastic coating protects the front of the coach, stairwell, and entry door lock.



CINDERWOOD



GOLD CORAL



MAROON CORAL



MOON STONE

EXTERIOR DÉCOR
FULL-BODY PAINT SCHEMES



ROCKY MOUNTAIN BROWN



RUSTIC CANYON



SILVER SAND



SUNLIT SAND



WHITE MAHOGANY

AUTOMOTIVE

Standard on All Models:

- Freightliner Chassis with Cummins ISL 600 HP/1950 lb Torque
- Independent Front Suspension
- Allison 4000 MH Transmission
- Heavy Duty Rear Hitch with 15,000 lb Towing Capacity
- Six Aluminum Wheels Plus Two Steel Inner Wheels
- Two-stage Engine Brake
- VIP Smart Wheel
- Automatic Air Leveling System
- HWH - Hydraulic Leveling System
- Fog Lights

FREIGHTLINER CHASSIS

Standard on All Models:

45 OZ

Engine	Cummins ISL 600 HP/1950 lb Torque
GVWR	50,000 lb
GAWR - Front	17,000 lb
GAWR - Rear	20,000 lb
GAWR - Tag Axle	13,000 lb
GCWR	65,000 lb
Alternator Amps	270
DEF Tank* (Gallons)	13
Wheel Base	316"
Tire Size	315/80R 22.5

*Diesel Exhaust Fluid (DEF) is the active component used in Selective Catalytic Reduction (SCR) engines to reduce nitrogen oxide emissions by 90% to meet EPA standards.

WEIGHTS & MEASURES

Overall:

45 OZ

Overall Length (Approximate*)	44' 11"
Overall Height with Roof Air (Maximum)	12' 11"
Interior Height	84"
Overall Width	101"
Interior Width	96"
Fresh Water (Gallons)	90
Black Water (Gallons)	50
Grey Water (Gallons)	70
Basement Storage (Cubic Feet - Approximate)	165
Minimum Garage Height	13' 5"

*The approximated coach length does not include side-view mirrors and rear ladder.

STRUCTURAL

Standard on All Models:

- Steel Cockpit Overhead Support Frame
- Seamless One-piece Gel-coat Fiberglass Molded Roof Cap
- Gel-coat Fiberglass Outside Wall Panels
- One-piece Molded Gel-coat Fiberglass Front & Rear Caps with Integrated Air Intake
- Steel/Aluminum Laminated Side Walls, Floor & Roof
- Insulated Roof Duct Laminated into Roof Construction
- Laminated Floor Decking
- Steel Basement Construction

COCKPIT

Standard on All Models:

- Contemporary Wrap-around Dash
- Backlit Lettering for Dash Switches
- Built-in Driver & Passenger Consoles with Control Switches
- Six-way Power Driver & Passenger Seats including Passenger Power Footrest
- Adjustable Headrests on Driver & Passenger Seats
- Heated & Cooled Driver/Passenger Seat with Lumbar Support
- Integrated Seat Belts
- Solid Surface Step Well with Recessed Lighting
- TV in Overhead Cockpit Area
- Computer Slide-out Tray in Dash with Lock-out Rails
- Built-in Storage Drawers in Dash
- Smart Wheel with Controls for ICC, Cruise & Windshield Wipers, High Beam/Low Beam, Stereo & Radio
- In-dash Navigation System with Smart Wheel Controls
- Adjustable Accelerator & Brake Pedals
- Driver & Passenger Overhead Fans
- Driver & Passenger Map Lights
- Driver/Passenger Side Power Solar/Privacy Shades
- Power Solar/Privacy Windshield Shade
- Driver Side Insulated Power Window
- Power Steering
- Dual 12 V Outlets in Dash Area (Driver)
- Satellite Radio (Requires Subscription)
- Subwoofer in Dash
- Color Rear Vision Monitor System with Built-in Cameras & Mirrors
- Side-view Cameras Activated by Turn Signals
- 12 V Battery Power Disconnect
- Fire Extinguisher
- Rearview Mirror with Integrated Compass & Outside Temperature
- USB Dash Receptacle

GENERAL EXTERIOR

Standard on All Models:

- One-piece Fiberglass Gel-coat Front & Rear Fenders
- Swing-up Fiberglass Gel-coat Engine Access Door
- One-piece Aluminum Face Swing-out Baggage Doors with Integrated Power Locks
- Pass-through Full Basement Storage
- Slide-out Storage Tray (Slides Out Both Sides)
- 12,500 Onan® Generator with Power Slide
- Phone, 120 V & 12 V Outlets Inside Storage Compartment
- Auto Generator Start System
- Under Coach Ground Effect Lighting
- Under Slide-out Ground Effect Lighting
- Six Battery—900 amp-hrs Extended Life Battery Bank
- Three Low Profile Roof ACs with Heat Pumps
- Two Solar Panels
- Multi-port Manifold System for Hot & Cold Water Lines
- Easy Hook-up Water Compartment with Built-in Hose Exits
- In-motion Satellite System*
- One-piece Panoramic Windshield
- Black Tank Flush System
- Water Filter
- Power Hose Reel
- Outside Shower
- Air Horn
- Recessed LED Docking Lights
- Two Carefree Paramount Awnings (Three Positions)
- Lighted Exterior Grab Handle
- Deadbolt Entrance Door Lock
- Prewired for Winegard Trav'ler Satellite
- SeeLevel Tank Monitor at Dump Station
- Keyless Entry System (Includes Exterior Compartment Doors)
- Basement & Outside Compartment Lights
- Basement Freezer
- Custom Mud Flap
- Electric Power Cord Reel
- Exterior TV
- Front Cap Protective Coating
- Flush Mounted & Painted-frame Dual Pane Windows
- Rearview Heated Mirrors with Integrated Side-view Cameras
- 2800 Watt Pure Sine Wave Inverter
- Porch Light

Available Options:

	45 OZ
2nd Electric Slide-out Tray	○

* High-definition programming is not available on a domed satellite antenna unless you subscribe to DISH Network®.

GENERAL INTERIOR

Standard on All Models:

- Wall Mounted Thermostats
- 12 V Attic Fans with Hardwood Louvers & Wall Mounted Controls
- Cable TV Hook-up & Phone Jacks
- Solid Hardwood Raised Panel Doors
- Recessed Doors & Drawers
- Self-closing Ball Bearing Drawer Slides (Select Areas)
- Heated Tile Floor
- Padded Soft Touch Vinyl Ceiling
- Power Solar/Privacy Shades with Wall Mounted Controls (Day & Night)
- Porcelain Tile Flooring Throughout Coach
- Integrated Speakers
- Ceiling Flush Mounted Multi-lighting System
- Wall Mounted Switches for Lights & Accessories
- 50 Amp Electrical Distribution
- 12 V Breaker Panel
- Energy Management System
- Electric Step Well Cover
- Central Vacuum Cleaner System with VacPan
- Hydronic Heating System with Continuous Hot Water
- GFI Outlets at Galley & Lavatories
- Interior Grab Handle at Entry Door
- Entertainment System with Blue-ray™ Player
- Complete Cable Wiring Interfacing with Surround Sound & Satellite Receiver
- Smoke Alarm
- SeeLevel Interior Tank Monitor
- All Electric Coach
- Extraordinaire™ AC System
- LED Lights

Available Options:

	45 OZ
Glazed Canyon Cherry Solid Cabinet Doors & Drawer Fronts	○
Glazed Cherry Solid Cabinet Doors & Drawer Fronts	○
Glazed Honey Natural Cherry Solid Cabinet Doors & Drawer Fronts	○
White Chocolate Cabinet Doors & Drawer Fronts (Bath)	○
Luster Sheen Finish	○

LIVING AREA/DINETTE

Standard on All Models:

- Dinette with Built-in Storage Cabinets
- Decorative Ceiling Panel
- Ultra Leather Air-Coil Hide-A-Bed on Driver Side
- Ultra Leather Magic Bed on Passenger Side
- Decorative Wall & Dinette Lighting Package
- Carbon Monoxide Detector
- Home Theater Surround Sound System with Blu-Ray™ Player

Available Options:

	45 OZ
Ultra Leather L-shaped Chaise Sofa/Sleeper on Driver Side	○
Fireplace on Passenger Side	○
Entertainment Center with One Luxury Recliner on Passenger Side	○

All options may not be available in every model. Because of progressive improvements, specifications, standard & optional equipment are subject to change without notice or obligation. For a complete & up-to-date list of available options & specifications, as well as information on Tiffin's full line of motorhomes, visit tiffinmotorhomes.com.

KITCHEN

- Standard on All Models:**
- Solid Surface Countertops and Splash Guards
 - Residential Stainless Steel Refrigerator
 - Integrated Solid Surface Galley Sink with Solid Surface Covers
 - Ceramic Tile Backsplash with Decorative Inlays
 - Drawer Type Dishwasher
 - Wolf Cooktop
 - Power Solar/Privacy Shades & Hardwood Valance
 - Stainless Steel Convection Microwave with Exterior Venting
 - Induction Cooktop
 - Built-in Soap Dispenser

BEDROOM

- Standard on All Models:**
- TV
 - Dual Control Air Comfort King Mattress (72" x 80") with Nightstands
 - Ceiling Fan
 - Decorative Hardwood Ceiling Ring
 - Under Bed Storage
 - Ceiling Fan
 - Solar/Privacy Shades
 - DVD System & Satellite Receiver
 - Vanity with Built-in Drawers
 - Security Safe

Available Options: **45 OZ**

Memory Foam King Mattress (72" x 80") O

BATH

- Standard on All Models:**
- Two Rectangular Lavatory Sinks with Soap Dispensers
 - Dual Medicine Cabinets
 - Elongated Ceramic Toilet with Electric Flush
 - Towel Holders & Lavatory Accessories Package
 - Stacked Washer/Dryer in Rear Wardrobe
 - Laundry Center with Storage & Drawers in Rear Wardrobe
 - Solid Surface Shower Walls with Inlaid Tile & Residential Glass Door
 - Decorative Pocket Doors
 - Skylight in Shower & LED Light
 - Hand Held Shower with On/Off Switch

WARRANTY

The Tiffin Five-Star Warranty.
The best in the business, bar none.



At Tiffin Motorhomes, we build for quality first and foremost, limiting our production to just 12 coaches a day to ensure meticulous craftsmanship. It may not be the most business-savvy way to run a company but it is the best way. By investing the time and effort to do things right, we want you, as a Tiffin owner, to have the utmost confidence in your coach, as well as a peace of mind you won't find with other manufacturers. You see, not only do we stand proudly behind our product, we stand behind you as well.

★ **10**

**YEAR
CONSTRUCTION
WARRANTY**

The structural integrity of the welded frame of entire coach is warranted for 10 years.

★ **5**

**YEAR
DELAMINATION
WARRANTY**

We guarantee against all exterior fiberglass delamination or wall separation for 5 years.

★ **1**

**YEAR
COMPREHENSIVE
WARRANTY**

Your coach is warranted against defects in materials and workmanship for 12 months, or 12,000 miles of use.

★ **1**

**YEAR
COACH ROADSIDE
SERVICES**

Available through Coach-Net, the country's largest RV emergency road service, this program provides 24/7 access to responsive roadside and technical assistance.

★ **Ongoing
Owner
Support**

No other motorhome company can compare with Tiffin's exceptional customer service. Email us at service@tiffinmotorhomes.com or call: **256/356.8661**.